

**SOUTH STOKE COMMUNITY BUILDING PROJECT**  
**OPEN CONSULTATION MEETING**  
 Saturday November 17, 2018  
 10.00-4.00 Village Hall

**Parishioner Feedback Form**

Your Name: (Optional)	
Postal Address: (Optional)	Post-Code:
Telephone: (Optional)	Email: (Optional)

**Feedback on the building options:** You can check the printer's Wi-Fi Direct name on the Printer Information Page. Press the Information button\* once to print this page.

- If you cannot find the printer's Wi-Fi Direct network name in the list, go to "Connecting a device that does not support Wi-Fi Direct"

*Please see attachment*

3. When the white, Wi-Fi Direct light starts blinking on the printer control panel, press the Wi-Fi Direct button\* next to this light to finish connecting. The light will stop blinking and stay on.

*Preference for the building to (1) have a library (2) share facilities*

*OR (3) Flexibility if shop no longer viable in the future.*

If a PIN code is required, the printer will print a page with the current PIN code, as well as additional instructions.

Note: A unique Wi-Fi Direct PIN code is generated whenever a connection attempt is made. This code is different from the Wi-Fi Direct password that is listed on the Printer Information Page.

**Feedback on the locations:**

**Connecting a device that does not support Wi-Fi Direct**

1. Turn on wireless on your mobile device or computer.
2. Select the printer's Wi-Fi Direct network name from the list of available wireless networks.
3. Enter the Wi-Fi Direct password.

*Cafe needs to be positioned so that the terrace is in the sunshine. A sunny terrace is a priority. A dark, shady terrace will put people off.*

Note: You can check the printer's Wi-Fi Direct name and Wi-Fi Direct password from Printer Information Page. Press the Information button\* once to print this page. (Default Wi-Fi Direct Password: 12345678)

**Feedback on the designs:**

**Note:**

The printer can only maintain 5 Wi-Fi Direct connections at the same time. If 5 connections have already been established, the white, Wi-Fi Direct light will blink rapidly for a short time when the next device attempts but fails to connect.

**Tip:**

- Press the Wi-Fi Direct button\* and the Information button\* at the same time to print this sheet again.
- To view and customize Wi-Fi Direct settings, use the printer's home page (also called the embedded web server or EWS).

**How Can You Help??**

After you connect to your printer, open a web browser and type <http://192.168.228.1> in the address box. Click the Network tab, and then click Status in the Wi-Fi Direct section.

**\*Icon Descriptions**

Wireless

Information

Wi-Fi Direct



South Stoke Parish Council (SSPC) and its reporting working group (SSCBP) are GDPR compliant. For our policy on this issue, please refer to our Privacy Policy-Documents No'19 in our document archive on the SSPC website: [www.southstoke.org.uk](http://www.southstoke.org.uk)

**THANK YOU FOR YOUR COMMENTS, QUERIES AND RESPONSES!! PLEASE DROP OFF AT THE VILLAGE SHOP OR #13 CHAPEL CLOSE.**

Please see the attachment for my detailed comments

Building Options - single building.

AS see attachment for reasons.

Location - cafe terrace must be in a sunny location

AS see attachment.

Design - I support the project but lots of concerns regarding the external dimensions and external appearance. AS see attachment.



**SOUTH STOKE COMMUNITY BUILDING PROJECT**  
**OPEN CONSULTATION MEETING**  
 Saturday November 17, 2018  
 10.00-4.00 Village Hall

**Parishioner Feedback Form**

Your Name: (Optional)	
Postal Address: (Optional)	Post-Code:
Telephone: (Optional)	Email: (Optional)

**WE NEED YOUR FEEDBACK PLEASE!**

**Feedback on the building options:**

The option of two buildings would be better as both
buildings on oneside would look Too cluttered

**Feedback on the locations:**

one building would impact on the residents living
on the East and South sides. The residents lives
would be disrupted when there are functions, therefore
the hall should be at the other end of the rec where it would
Feedback on the designs: have less effect on the residents.

The designs are very good but not the cranked
design The layout has been planned very well.
Does the cost cover all three designs?

**~~How Can You Help??~~**

There should be another consultation with the
village plus another vote!!

South Stoke Parish Council (SSPC) and its reporting working group (SSCBP) are GDPR compliant. For our policy on this issue, please refer to our Privacy Policy-Documents No 19 in our document archive on the SSPC website: [www.southstoke.org.uk](http://www.southstoke.org.uk)

**THANK YOU FOR YOUR COMMENTS, QUERIES AND RESPONSES!! PLEASE DROP OFF AT THE VILLAGE SHOP OR #13 CHAPEL CLOSE.**



**SOUTH STOKE COMMUNITY BUILDING PROJECT**  
**OPEN CONSULTATION MEETING**  
Saturday November 17, 2018  
10.00-4.00 Village Hall

**Parishioner Feedback Form**

Your Name: (Optional)	
Postal Address: (Optional)	Post-Code:
Telephone: (Optional)	Email: (Optional)

**Feedback on the building options:**

NONE: THE BLDG SHOULD BE <del>ADJACENT</del> ADJACENT TO
EACH OTHER WITH SHARED FACILITIES. ANY
DECKING SHOULD BE SOUTH / WEST FACING.

**Feedback on the locations:**

SHOULD BE CLOSE TO EXISTING LOCATION. AT THE
TOP OF THE SITE.

**Feedback on the designs:**

UNNECESSARILY EXPENSIVE. AND POOR DESIGN

**How Can You Help??**


South Stoke Parish Council (SSPC) and its reporting working group (SSCBP) are GDPR compliant. For our policy on this issue, please refer to our Privacy Policy-Documents No' 19 in our document archive on the SSPC website: [www.southstoke.org.uk](http://www.southstoke.org.uk)

**THANK YOU FOR YOUR COMMENTS, QUERIES AND RESPONSES!! PLEASE DROP OFF AT THE VILLAGE SHOP OR #13 CHAPEL CLOSE.**



**SOUTH STOKE COMMUNITY BUILDING PROJECT**  
**OPEN CONSULTATION MEETING**  
 Saturday November 17, 2018  
 10.00-4.00 Village Hall

**Parishioner Feedback Form**

Your Name: (Optional)	
Postal Address: (Optional)	Post-Code:
Telephone: (Optional)	Email: (Optional)

**WE NEED YOUR FEEDBACK PLEASE!**

Feedback on the building options:

<p>None of the options seem appropriate or cost effective for our village</p>
---

Feedback on the locations:

<p>Comes out too much into the rec. Needs to be in corner where/behind where the shop is. Why are we intent on using up all</p>
---

<p>Feedback on the designs: the field with buildings/trees/rough areas?          Enormous, too tall          Excessive building for our needs/wants</p>
---

**How Can You Help??** Any other comments?

<p>What are the payback costs? How much will the hire be? Can you really justify this level of shop when profits are minimal?</p>
---

South Stoke Parish Council (SSPC) and its reporting working group (SSCBP) are GDPR compliant. For our policy on this issue, please refer to our Privacy Policy-Docment No' 19 in our document archive on the SSPC website: [www.southstoke.org.uk](http://www.southstoke.org.uk)

**THANK YOU FOR YOUR COMMENTS, QUERIES AND RESPONSES!! PLEASE DROP OFF AT THE VILLAGE SHOP OR #13 CHAPEL CLOSE.**

**SOUTH STOKE COMMUNITY BUILDING PROJECT  
OPEN CONSULTATION MEETING**

Saturday November 17, 2018  
10.00-4.00 Village Hall

**Parishioner Feedback Form**

<b>Your Name:</b> (Optional)	
<b>Postal Address:</b> (Optional)	<b>Post-Code:</b>
<b>Telephone:</b> (Optional)	<b>Email:</b> (Optional)

**WE NEED YOUR FEEDBACK PLEASE!**

**Feedback on the building options:**


**Feedback on the locations:**


**Feedback on the designs:**


**How Can You Help??**


South Stoke Parish Council (SSPC) and its reporting working group (SSCBP) are GDPR compliant. For our policy on this issue, please refer to our Privacy Policy-Documents No'19 in our document archive on the SSPC website: [www.southstoke.org.uk](http://www.southstoke.org.uk)

**THANK YOU FOR YOUR COMMENTS, QUERIES AND RESPONSES!! PLEASE DROP OFF AT THE VILLAGE SHOP OR #13 CHAPEL CLOSE.**



**SOUTH STOKE COMMUNITY BUILDING PROJECT**  
**OPEN CONSULTATION MEETING**  
 Saturday November 17, 2018  
 10.00-4.00 Village Hall

**Parishioner Feedback Form**

Your Name: (Optional)	
Postal Address: (Optional)	Post-Code:
Telephone: (Optional)	Email: (Optional)

**WE NEED YOUR FEEDBACK PLEASE!**

**Feedback on the building options:**

- Big improvement on previous versions - Hall looks too large in terms of foyer, number of toilets - Preference is for slightly smaller, single, crooked version.
---

**Feedback on the locations:**

- Preference is for SE of the Rec, but would prefer to see it tucked away more (huge amount of wasted open space behind it). - Not convinced that orientation is right (even after speaking with the architect!), the café (which will determine whether the shop remains viable) must find some more sun as its main aspect.
--

**Feedback on the designs:**

- Again an improvement, like the wood, but it does look a bit like a 1970s/80s school building! Perhaps make it more contemporary in terms of shape or materials. - Like all the Green features that are included, would be good to get it 'near as dammit' carbon neutral.
--

**How Can You Help??**

Bit busy with housing!
Open Day was very well done - thanks for all your efforts!

South Stoke Parish Council (SSPC) and its reporting working group (SSCBP) are GDPR compliant. For our policy on this issue, please refer to our Privacy Policy-Documents No' 19 in our document archive on the SSPC website: [www.southstoke.org.uk](http://www.southstoke.org.uk)

**THANK YOU FOR YOUR COMMENTS, QUERIES AND RESPONSES!! PLEASE DROP OFF AT THE**

**SOUTH STOKE COMMUNITY BUILDING PROJECT**  
**OPEN CONSULTATION MEETING**  
 Saturday November 17, 2018  
 10.00-4.00 Village Hall

**Parishioner Feedback Form**

Your Name: (Optional)	
Postal Address: (Optional)	Post-Code:
Telephone: (Optional)	Email: (Optional)

**Feedback on the building options:**

NEITHER. THE 2 BLDGS SHOULD BE ~~1~~ TO KEEP LOSYS DOWN  
 AND HAVE SHARED FACILITIES. SOUTH WEST  
 FACING.

**Feedback on the locations:**

THE BUILDING SHOULD FACE S OR SW NOT NORTH!!!  
 KEEP THE IMPACT DOWN, BUILD BOTH WHERE THE SHOP  
 IS OVERLOOKING THE SWINGS.

**Feedback on the designs:**

SHOULD BE A TIMBER FRAMED BUILDING WITHOUT  
 THE GLAZED ROOFLIGHTS - TOO EXPENSIVE AND DATES  
 THE DESIGN.

**How Can You Help??**

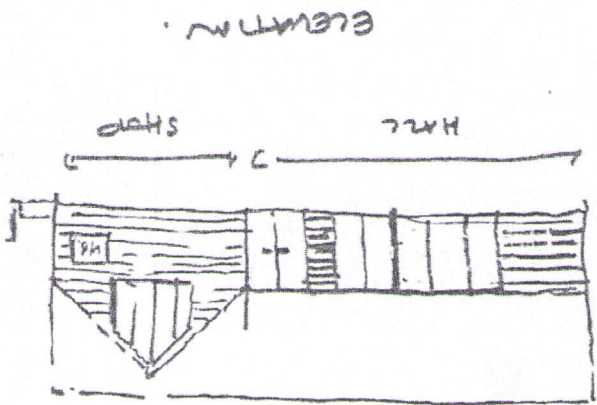
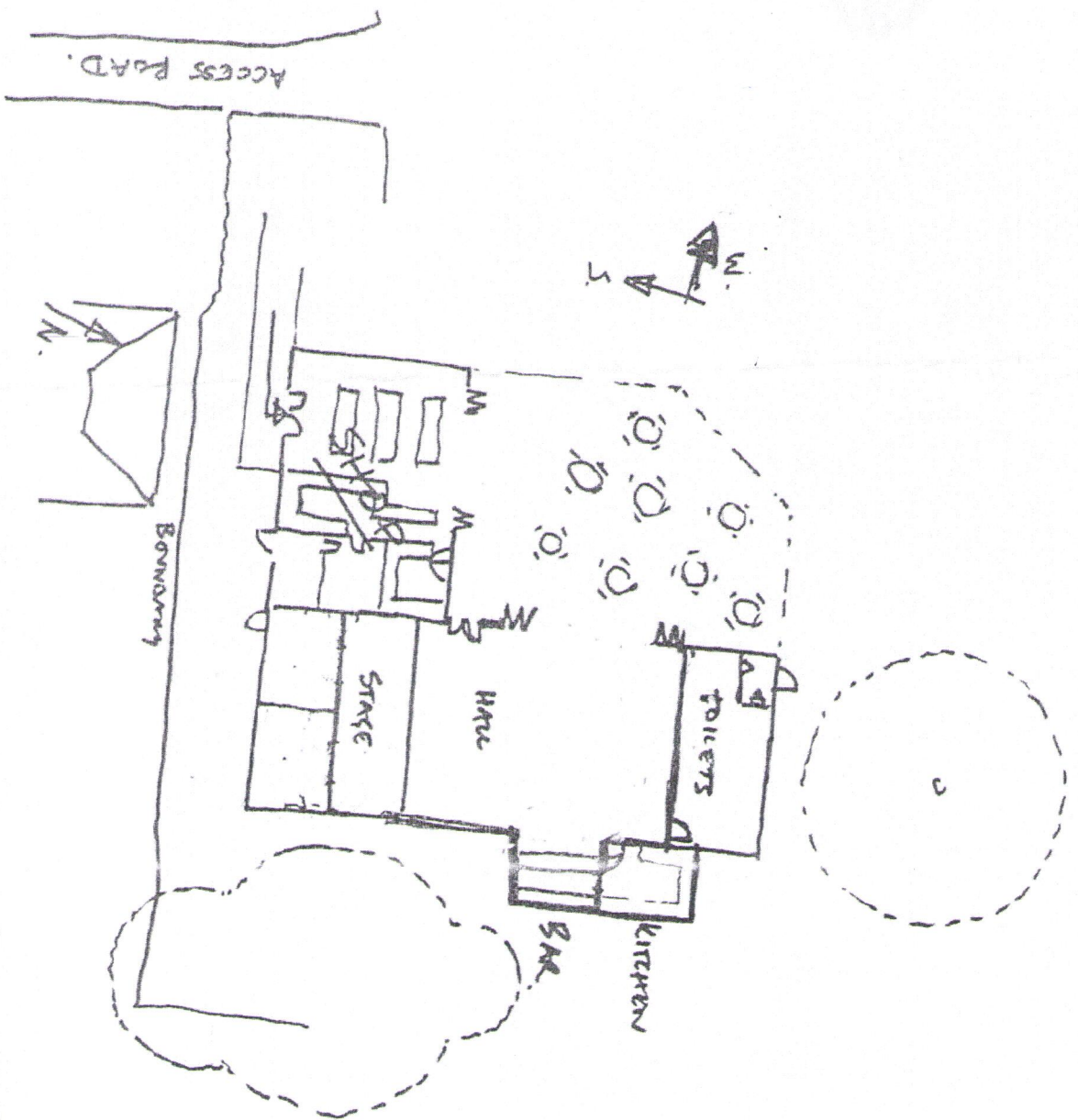
SUGGESTED PLAN ATTACHED

South Stoke Parish Council (SSPC) and its reporting working group (SSCBP) are GDPR compliant. For our policy on this issue, please refer to our Privacy Policy-Docment No'19 in our document archive on the SSPC website: [www.southstoke.org.uk](http://www.southstoke.org.uk)

**THANK YOU FOR YOUR COMMENTS, QUERIES AND RESPONSES!! PLEASE DROP OFF AT THE VILLAGE SHOP OR #13 CHAPEL CLOSE.**



# SOUTH SIDE COMMUNITY BUILDING.



**SOUTH STOKE COMMUNITY BUILDING PROJECT**  
**OPEN CONSULTATION MEETING**  
Saturday November 17, 2018  
10.00-4.00 Village Hall

**Parishioner Feedback Form**

Your Name: (Optional)	
Postal Address: (Optional)	Post-Code:
Telephone: (Optional)	Email: (Optional)

**Feedback on the building options:**

I prefer the one building rather than 2, and placed on the site of the old sports pavilion
--

**Feedback on the locations:**

I do not think it is fair on the houses between rec lane and bridge to have a tall, and at times noisy building right up against their back fence.
--

**Feedback on the designs:**

Not keen on the modern fad of wood cladding. Look at any building, wood clad, that is 10 years or more old, and it looks grey and dirty.
--

**How Can You Help??**

My real concern with this development, and the Glebe, is that nobody appears to have thought of the problems with Cross Keys Road, and the Rec Lane. Now bigger
---

PTU

South Stoke Parish Council (SSPC) and its reporting working group (SSCBP) are GDPR compliant. For our policy on this issue, please refer to our Privacy Policy-Documents No'19 in our document archive on the SSPC website: [www.southstoke.org.uk](http://www.southstoke.org.uk)

**THANK YOU FOR YOUR COMMENTS, QUERIES AND RESPONSES!! PLEASE DROP OFF AT THE VILLAGE SHOP OR #13 CHAPEL CLOSE.**